

MONTHLY MEMBERSHIP PROGRESS REPORT

District 105SE

Results as of: 3/31/2020

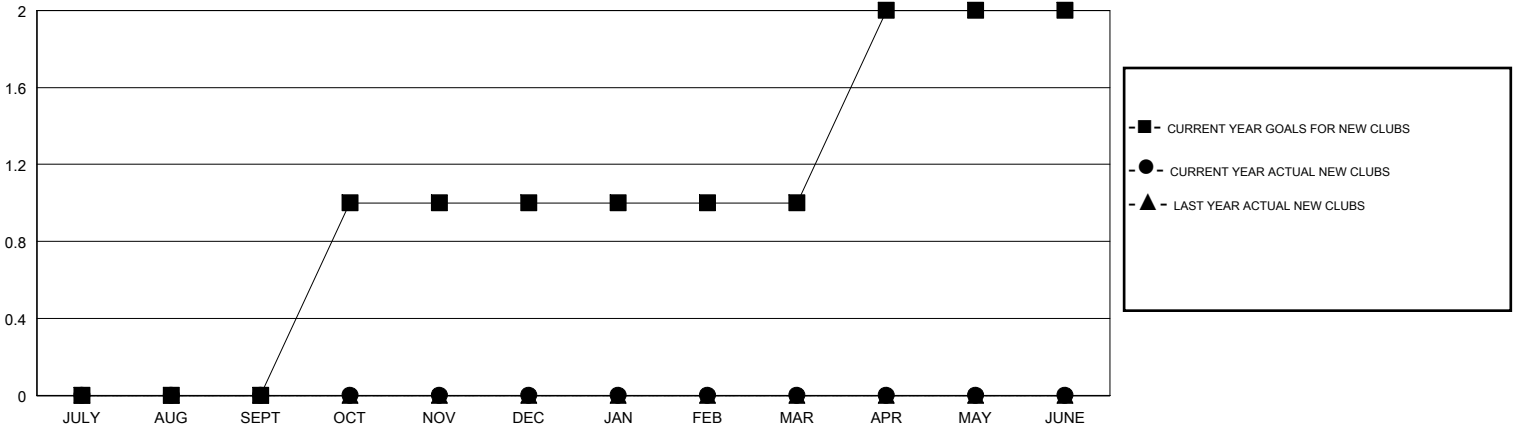
GMT:

LOCATION ENGLAND

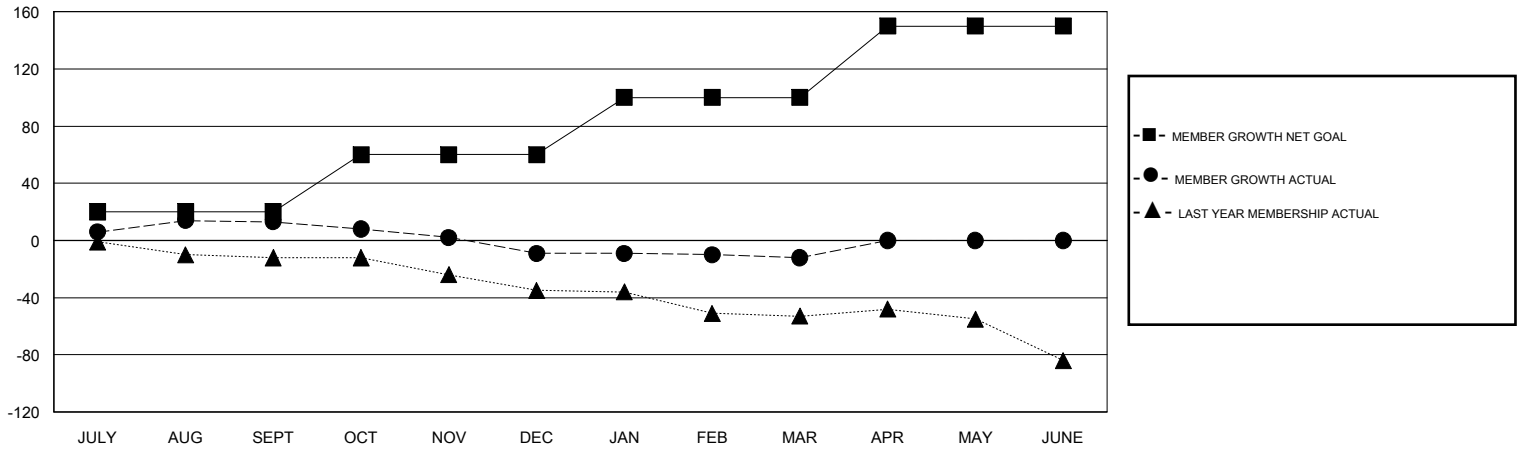
GMT CA

| Clubs | | | | Members | | | |
|-----------------------|---------------|-----------|---------------|-----------------------|------------------------|----------------------|----------------------------------------------|
| RESULTS FOR 2019-2020 | | | | RESULTS FOR 2019-2020 | | | |
| QUARTER | NEW CLUB GOAL | NEW CLUBS | DROPPED CLUBS | QUARTER | MEMBER GROWTH NET GOAL | MEMBER GROWTH ACTUAL | DROPPED MEMBERS ACTUAL (including transfers) |
| JULY/AUG/SEPT | 0 | 0 | 1 | JULY/AUG/SEPT | 20 | 37 | 21 |
| OCT/NOV/DEC | 1 | 0 | 0 | OCT/NOV/DEC | 40 | 22 | 43 |
| JAN/FEB/MAR | 0 | 0 | 0 | JAN/FEB/MAR | 40 | 17 | 19 |
| APR/MAY/JUNE | 1 | 0 | 0 | APR/MAY/JUNE | 50 | 0 | 0 |

GOALS AND ACTUAL NEW CLUBS CUMULATIVE



GOALS AND ACTUAL MEMBERS CUMULATIVE



| | | |
|-----------------------------------------------------------------------------------------|-----------------------------------------------------------|------------------------------------------------------------------------|
| DROPPED CLUBS: 1 | 36 CLUBS OF 62 ADDED 1 OR MORE NEW MEMBERS | GENDER DISTRIBUTION MALE 970 (72.60%) FEMALE 366 (27.40%) |
| DROPPED MEMBERS DECEASED 15 CLUB CANCELLED 0 OTHER 68 <hr/> TOTAL 83 | CLICK HERE FOR CUMULATIVE MEMBERSHIP DATA | TOTAL FAMILY UNIT MEMBERS 152 FAMILY MEMBERS PAYING HALF DUES 76 |